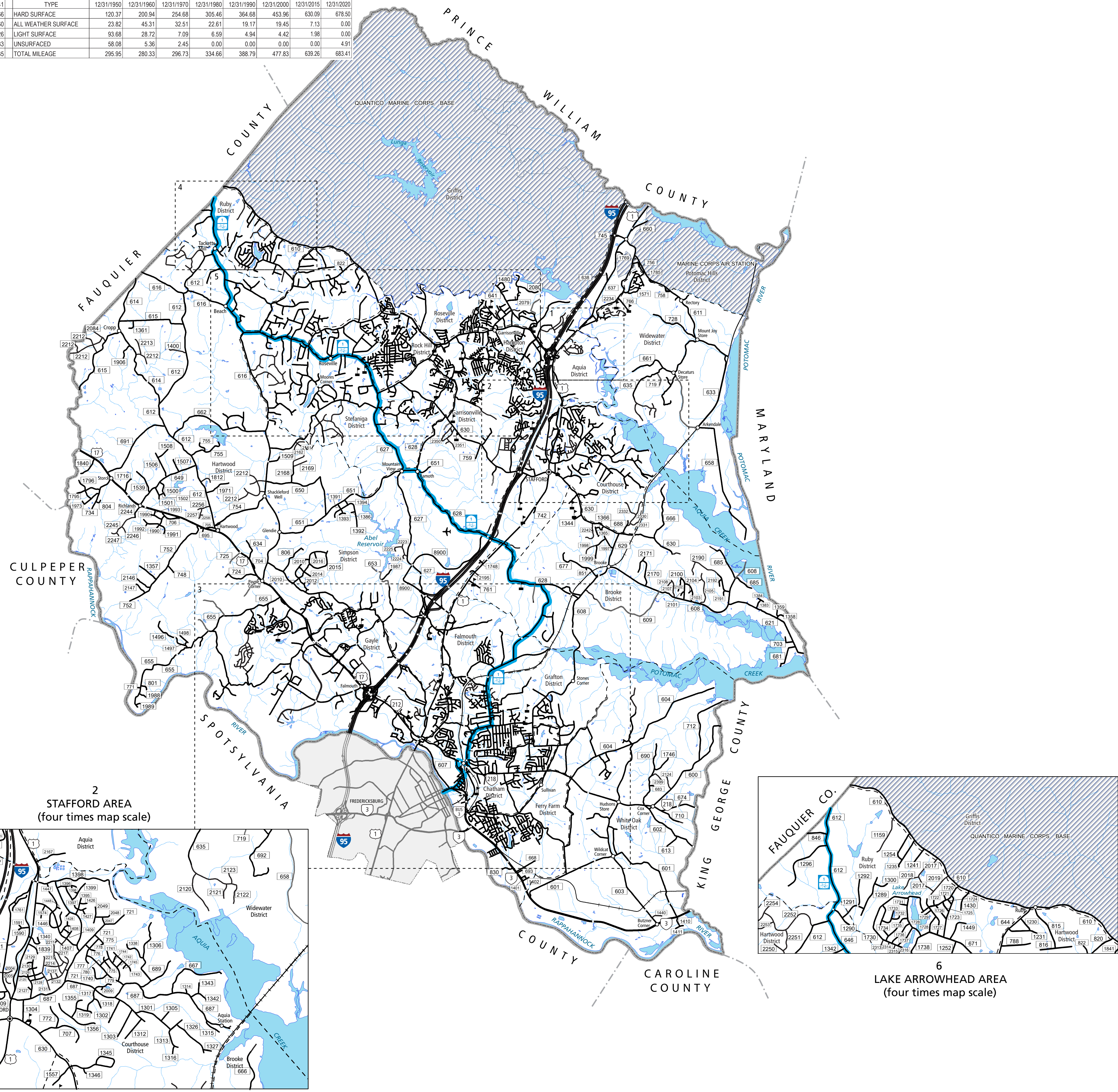


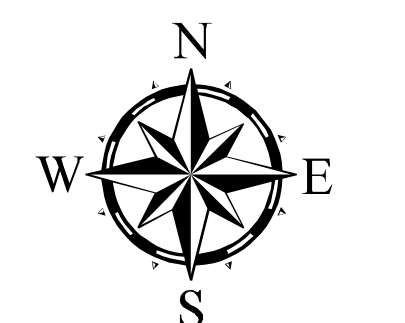
TOTAL PRIMARY MILEAGE IN COUNTY 12/31/20: 44.96

SECONDARY MILEAGE TABULATION

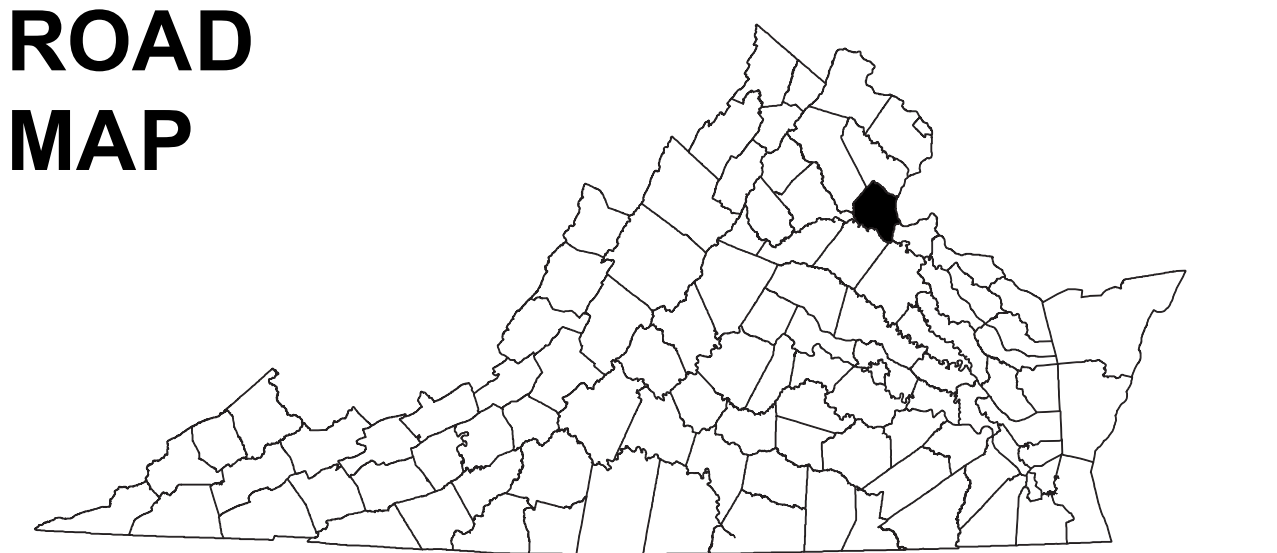
TYPE	7/1/1932	7/1/1934	7/1/1941	TYPE	12/31/1950	12/31/1960	12/31/1970	12/31/1980	12/31/1990	12/31/2000	12/31/2015	12/31/2020
BIT SUR. PAVED	0.00	3.25	28.66	HARD SURFACE	120.37	200.94	254.68	305.46	364.68	453.96	630.09	678.50
GRAVEL SOIL ETC.	82.64	150.52	212.60	ALL WEATHER SURFACE	23.82	45.31	32.51	22.61	19.17	19.45	7.13	0.00
GRADED & DRAINED	40.21	24.95	8.26	LIGHT SURFACE	93.68	28.72	7.09	6.59	4.94	4.42	1.98	0.00
UNIMPROVED	118.65	49.10	4.83	UNSURFACED	58.08	5.36	2.45	0.00	0.00	0.00	0.00	4.91
TOTAL MILEAGE	241.50	227.82	254.35	TOTAL MILEAGE	295.95	280.33	296.73	334.66	388.79	477.83	639.26	683.41



STAFFORD COUNTY, VA



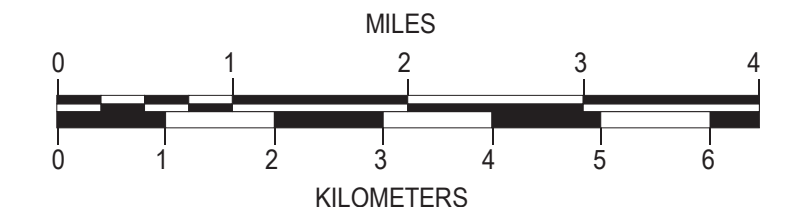
COUNTY ROAD MAP



STAFFORD COUNTY

ROAD CLASSIFICATIONS	MISCELLANEOUS
Frontage Road	Schools
Secondary Route	Seaports
State Route	Park_RideLots
U.S. Route	<b>AIRPORTS</b>
Urban Road	Commercial
LightSurface	General
DividedHwyInterstate	Military
AllWeatherSurface	<b>RAILROADS</b>
Unsurfaced	Metro
otherSurface	VARailroads
BikeRoutes	Park_N_Ride
AppalachianTrail	<b>BOUNDARIES</b>
Scenic Roads	MilitaryAreas
	MagisterialDistricts
	Incorp_Areas
	Natural_LandCover

Additional ROAD CLASSIFICATION (Post 2019)  
**Hard-surface**



The accuracy or completeness of this map is not guaranteed or warranted. Map depicts state-maintained highway network as of May 1, 2021. Copyright © 2021 by Commonwealth of Virginia Department of Transportation, All Rights Reserved

AN INVENTORY OF STATE MAINTAINED ROADS