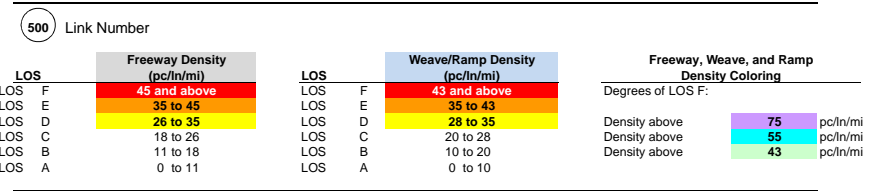
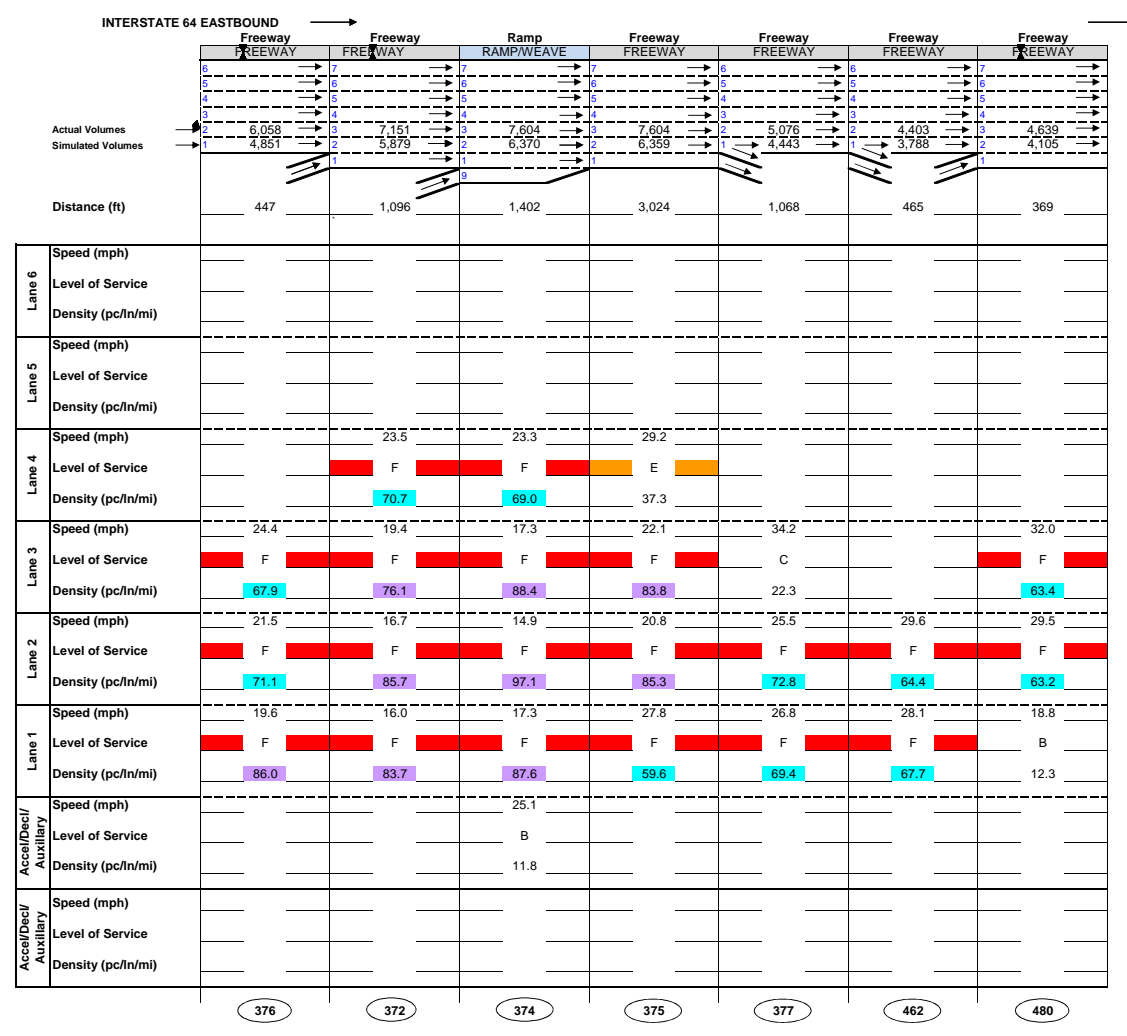
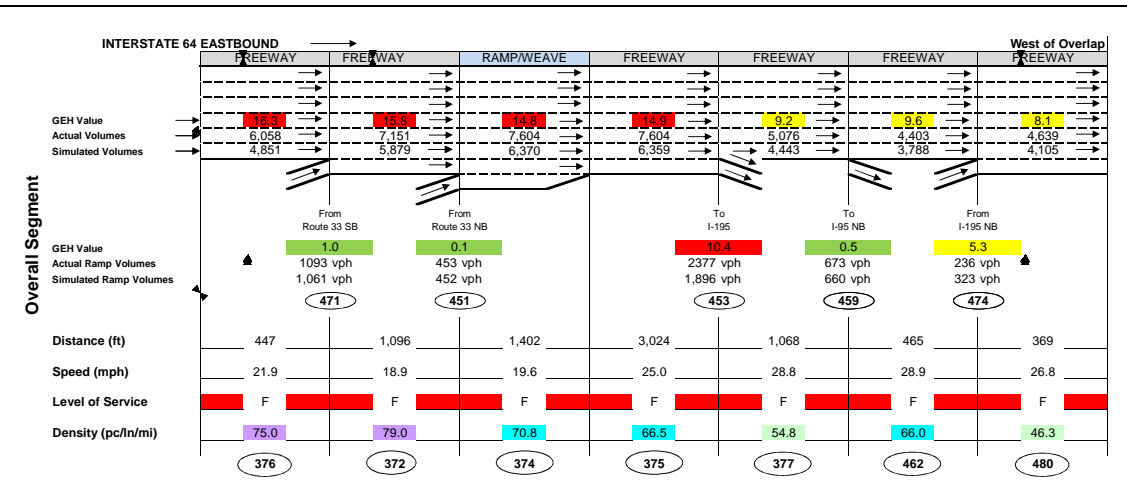


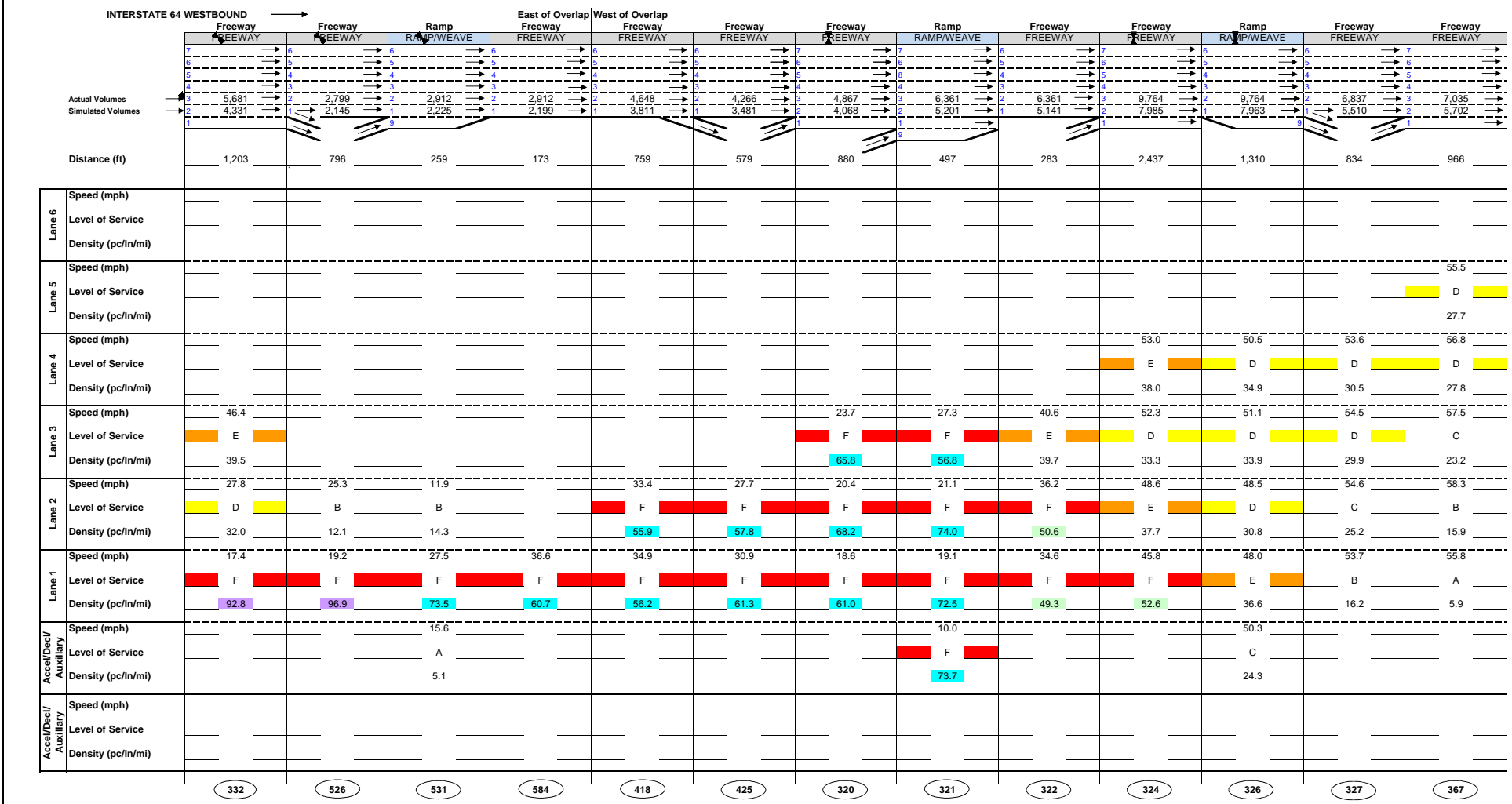
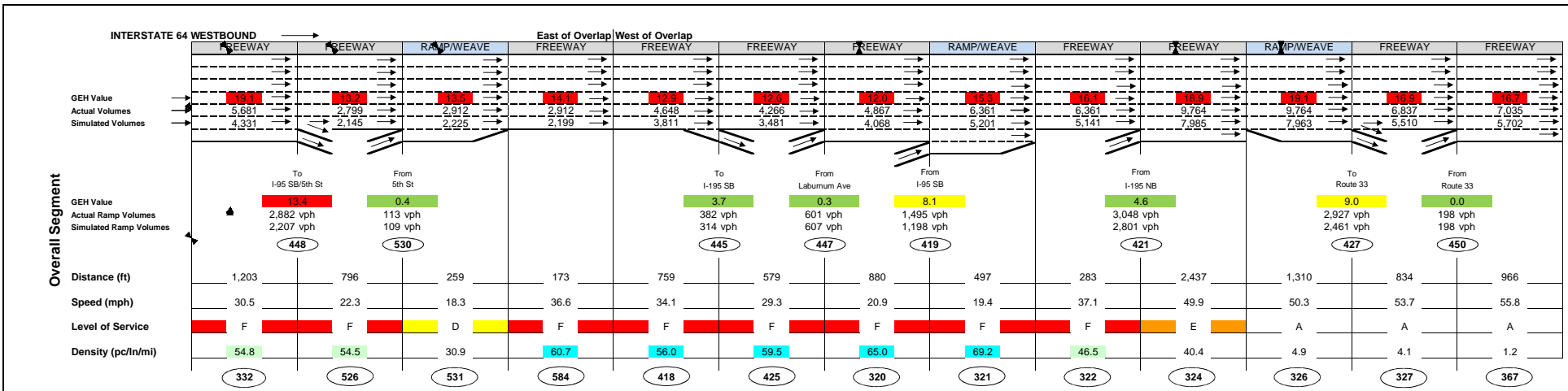
LEGEND





LEGEND

500 Link Number		Freeway Density (pc/ln/mi)		Weave/Ramp Density (pc/ln/mi)		Freeway, Weave, and Ramp Density Coloring	
LOS F	45 and above	LOS F	43 and above	Degrees of LOS F:			
LOS E	35 to 45	LOS E	35 to 43	Density above	75	pc/ln/mi	
LOS D	26 to 35	LOS D	28 to 35	Density above	55	pc/ln/mi	
LOS C	18 to 26	LOS C	20 to 28	Density above	43	pc/ln/mi	
LOS B	11 to 18	LOS B	10 to 20				
LOS A	0 to 11	LOS A	0 to 10				



LEGEND

(500) Link Number

LOS	Freeway Density (pc/n/mi)	LOS	Weave/Ramp Density (pc/n/mi)	Freeway, Weave, and Ramp Density Coloring
LOS F	45 and above	LOS F	43 and above	Degrees of LOS F:
LOS E	35 to 45	LOS E	35 to 43	Density above 75 pc/n/mi
LOS D	26 to 35	LOS D	28 to 35	Density above 55 pc/n/mi
LOS C	18 to 26	LOS C	20 to 28	Density above 43 pc/n/mi
LOS B	11 to 18	LOS B	10 to 20	
LOS A	0 to 11	LOS A	0 to 10	

INTERSTATE 195 NORTHBOUND

	Freeway	Ramp/Weave	Freeway	Freeway	Freeway	Ramp/Weave	Freeway
GEH Value	3.4	3.6	3.8	3.8	2.0	2.4	4.3
Actual Volumes	5,871	5,871	5,387	5,387	2,339	2,339	2,103
Simulated Volumes	5,617	5,598	5,110	5,110	2,244	2,226	1,911
		To Laburnum Ave		To I-64 WB		To I-95 SB	
GEH Value		1.3		4.0		5.3	
Actual Ramp Volumes		485 vph		3048 vph		236 vph	
Simulated Ramp Volumes		456 vph		2,829 vph		323 vph	
		475		472		474	
Distance (ft)	1,262	308	668	668	476	139	330
Speed (mph)	37.6	37.8	32.7	32.7	39.6	36.8	31.7
Level of Service	F	E	F	F	D	C	C
Density (pc/ln/mi)	51.2	41.4	55.6	55.6	30.6	21.1	25.4
	385	382	383	383	473	535	575

INTERSTATE 195 NORTHBOUND

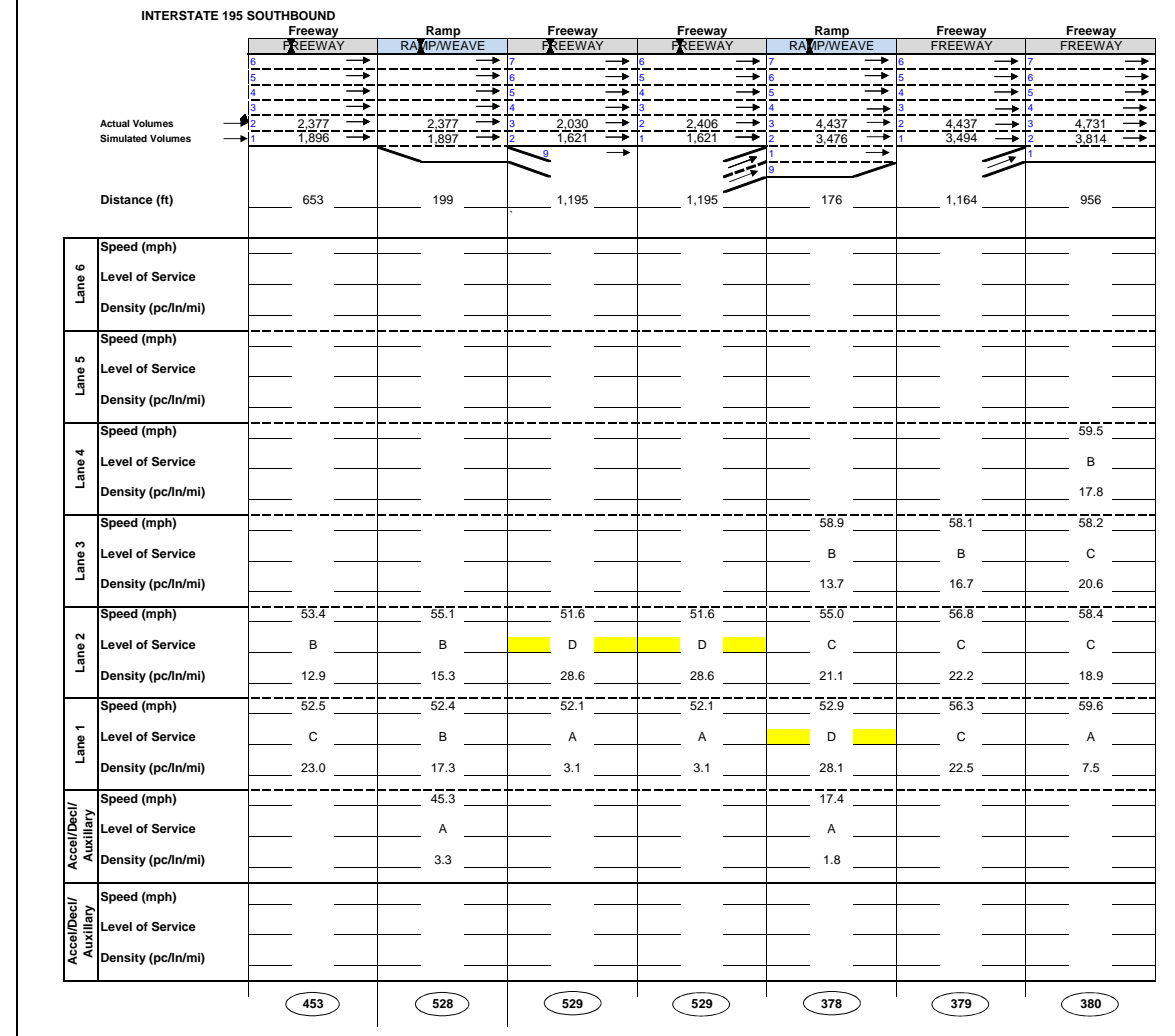
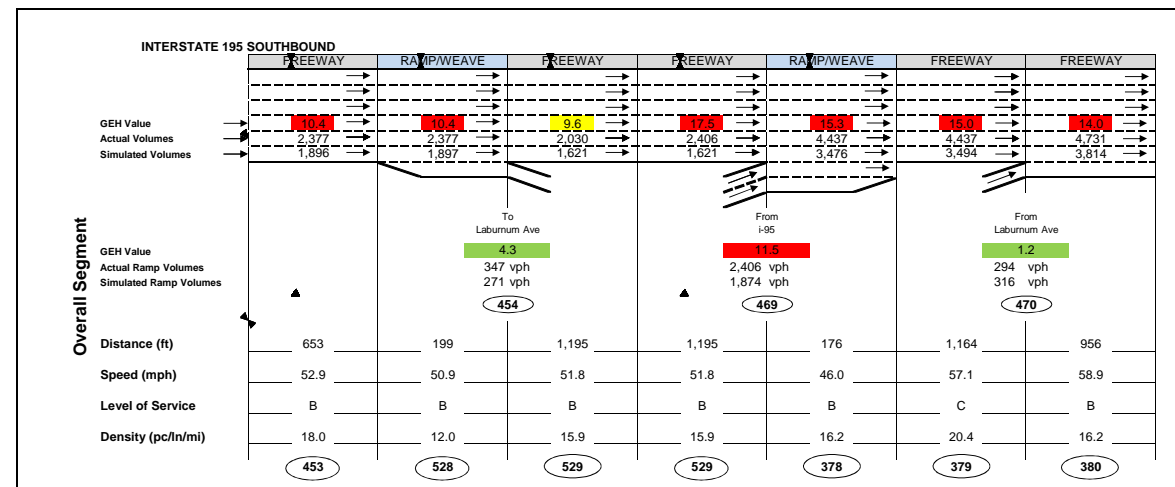
	Freeway	Ramp	Freeway	Freeway	Freeway	Ramp	Freeway
Actual Volumes	5,871	5,871	5,387	5,387	2,339	2,339	2,103
Simulated Volumes	5,617	5,598	5,110	5,110	2,244	2,226	1,911
Distance (ft)	1,262	308	668	668	476	139	330
Speed (mph)							
Level of Service							
Density (pc/ln/mi)							
Lane 6							
Lane 5							
Lane 4							
Lane 3	35.6	30.7	28.1	28.1		39.1	
Lane 2	38.5	34.0	29.5	29.5	41.2	35.9	24.2
Lane 1	38.6	39.2	40.6	40.6	37.9	35.3	39.3
Accel/Decel/Auxiliary		47.3					
Accel/Decel/Auxiliary		6.8					
	385	382	383	383	473	535	575

LEGEND

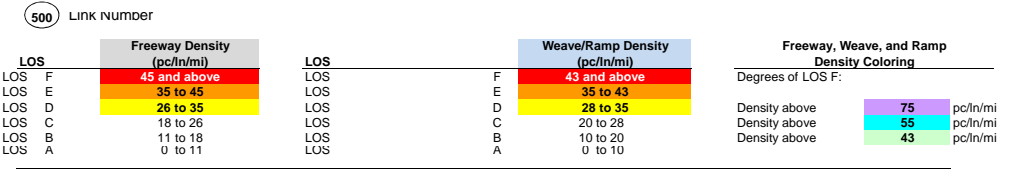
500 LINK NUMBER																													
<table border="1"> <tr><th>LOS</th><th>Freeway Density (pc/ln/mi)</th></tr> <tr><td>LOS F</td><td>45 and above</td></tr> <tr><td>LOS E</td><td>35 to 45</td></tr> <tr><td>LOS D</td><td>26 to 35</td></tr> <tr><td>LOS C</td><td>18 to 26</td></tr> <tr><td>LOS B</td><td>11 to 18</td></tr> <tr><td>LOS A</td><td>0 to 11</td></tr> </table>	LOS	Freeway Density (pc/ln/mi)	LOS F	45 and above	LOS E	35 to 45	LOS D	26 to 35	LOS C	18 to 26	LOS B	11 to 18	LOS A	0 to 11	<table border="1"> <tr><th>LOS</th><th>Weave/Ramp Density (pc/ln/mi)</th></tr> <tr><td>LOS F</td><td>43 and above</td></tr> <tr><td>LOS E</td><td>35 to 43</td></tr> <tr><td>LOS D</td><td>28 to 35</td></tr> <tr><td>LOS C</td><td>20 to 28</td></tr> <tr><td>LOS B</td><td>10 to 20</td></tr> <tr><td>LOS A</td><td>0 to 10</td></tr> </table>	LOS	Weave/Ramp Density (pc/ln/mi)	LOS F	43 and above	LOS E	35 to 43	LOS D	28 to 35	LOS C	20 to 28	LOS B	10 to 20	LOS A	0 to 10
LOS	Freeway Density (pc/ln/mi)																												
LOS F	45 and above																												
LOS E	35 to 45																												
LOS D	26 to 35																												
LOS C	18 to 26																												
LOS B	11 to 18																												
LOS A	0 to 11																												
LOS	Weave/Ramp Density (pc/ln/mi)																												
LOS F	43 and above																												
LOS E	35 to 43																												
LOS D	28 to 35																												
LOS C	20 to 28																												
LOS B	10 to 20																												
LOS A	0 to 10																												
<table border="1"> <tr><th>Freeway, Weave, and Ramp Density Coloring</th></tr> <tr><td>Density above 75 pc/ln/mi</td></tr> <tr><td>Density above 55 pc/ln/mi</td></tr> <tr><td>Density above 43 pc/ln/mi</td></tr> </table>		Freeway, Weave, and Ramp Density Coloring	Density above 75 pc/ln/mi	Density above 55 pc/ln/mi	Density above 43 pc/ln/mi																								
Freeway, Weave, and Ramp Density Coloring																													
Density above 75 pc/ln/mi																													
Density above 55 pc/ln/mi																													
Density above 43 pc/ln/mi																													



Figure 5
I-64 and I-95 Overlap Report
Northbound I-195
AM 2035 No Build Peak Hour MOE's
7:30 - 8:30 AM

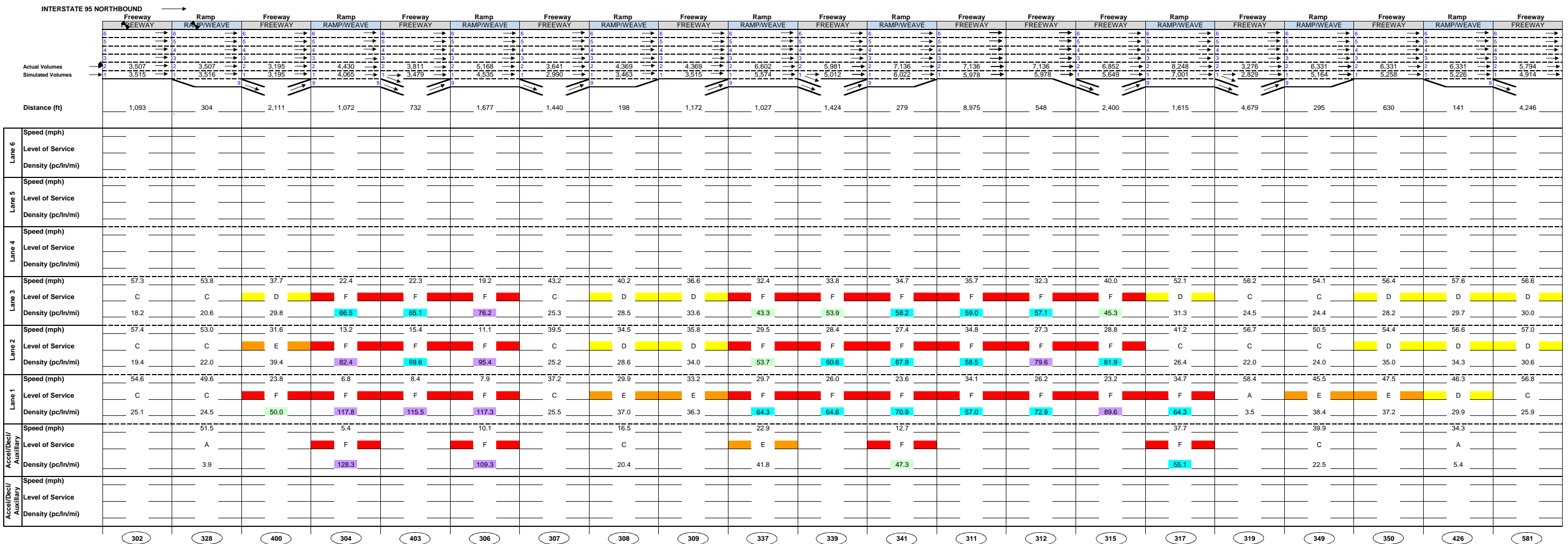
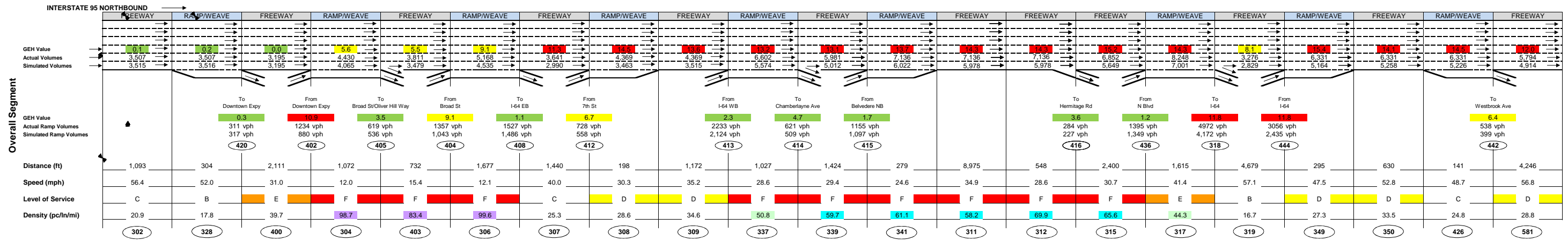


LEGEND



Kimley-Horn and Associates, Inc.

Figure 6
I-64 and I-95 Overlap Report
Southbound I-195
AM 2035 No Build Peak Hour MOE's
7:30 - 8:30 AM

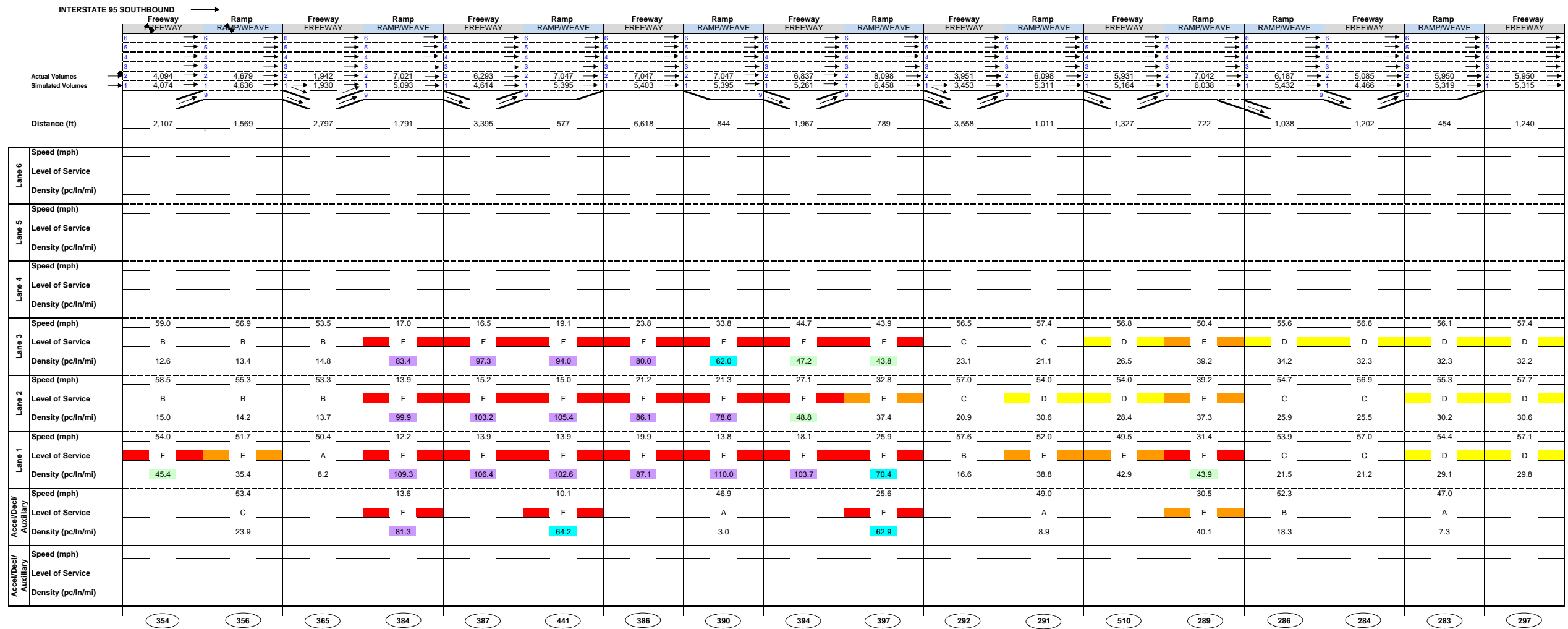
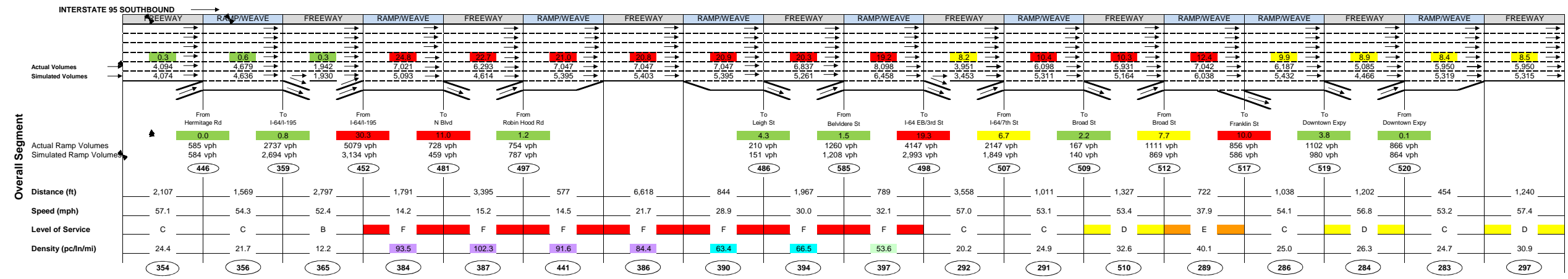


LEGEND

500	Link Number			
LOS F	Freeway Density (pc/ln/mi) 45 and above	LOS E	Weave/Ramp Density (pc/ln/mi) 43 and above	Degrees of LOS F:
LOS E	35 to 45	LOS F	35 to 43	Density above 75 pc/ln/mi
LOS D	26 to 35	LOS D	28 to 35	Density above 55 pc/ln/mi
LOS C	18 to 26	LOS C	20 to 28	Density above 43 pc/ln/mi
LOS B	11 to 18	LOS B	10 to 20	
LOS A	0 to 11	LOS A	0 to 10	

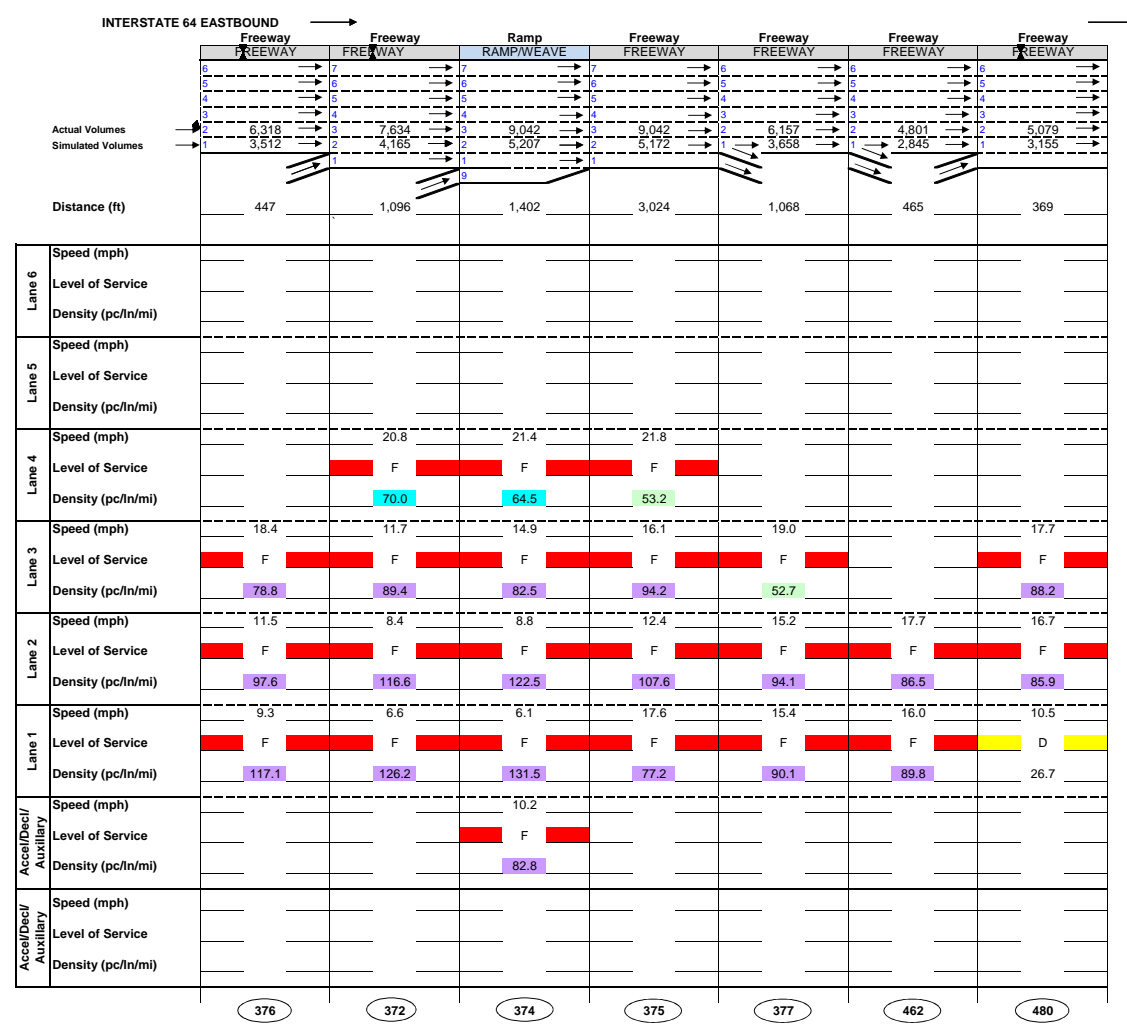
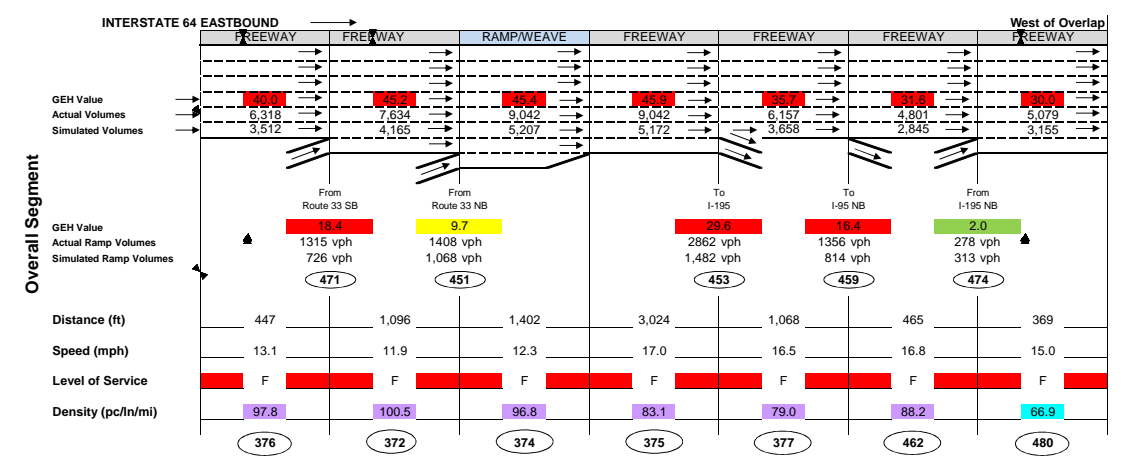


Figure 7
I-64 and I-95 Overlap Report
Northbound I-95
PM 2035 No Build Peak Hour MOE's
4:30 - 5:30 PM



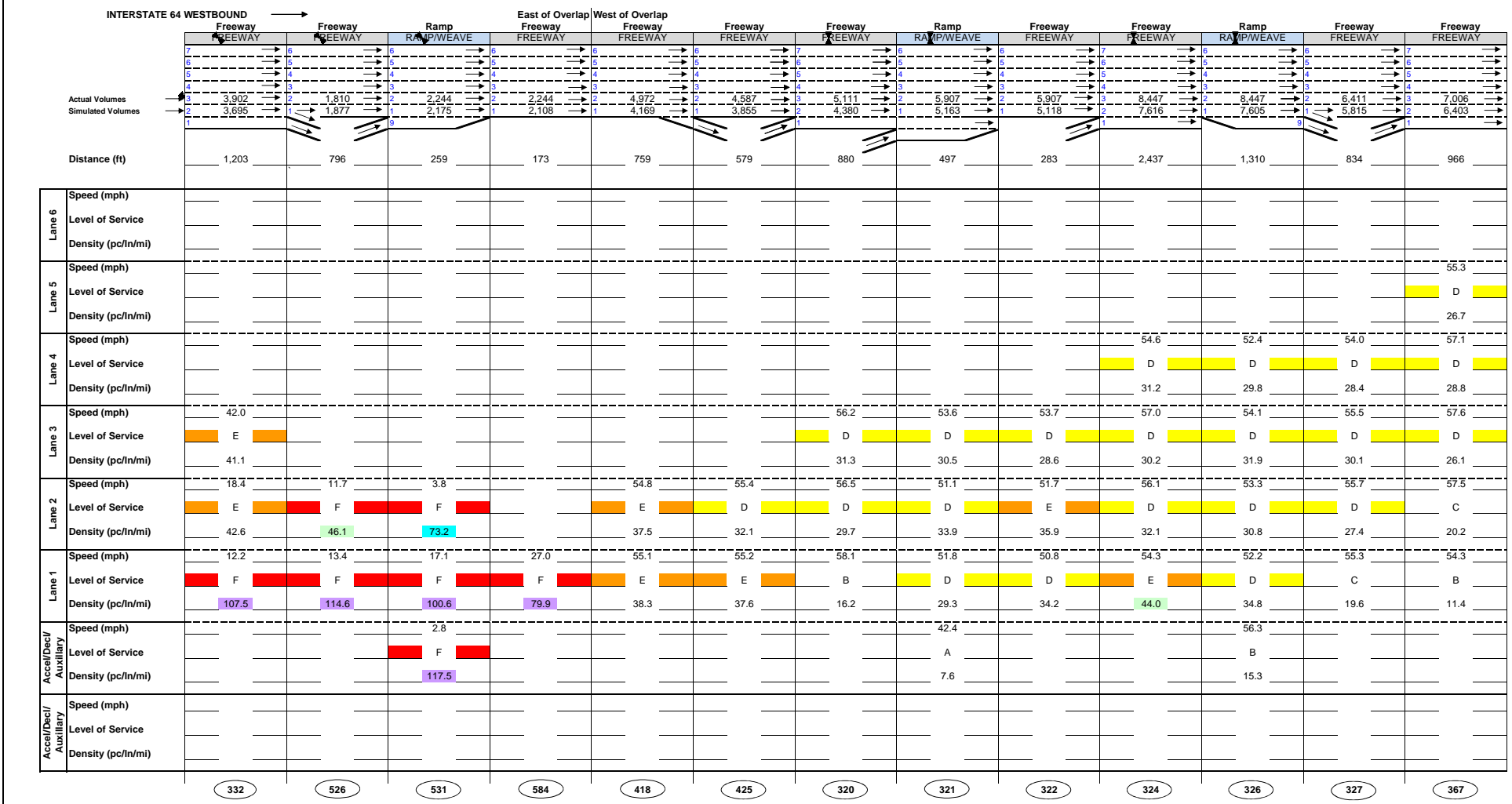
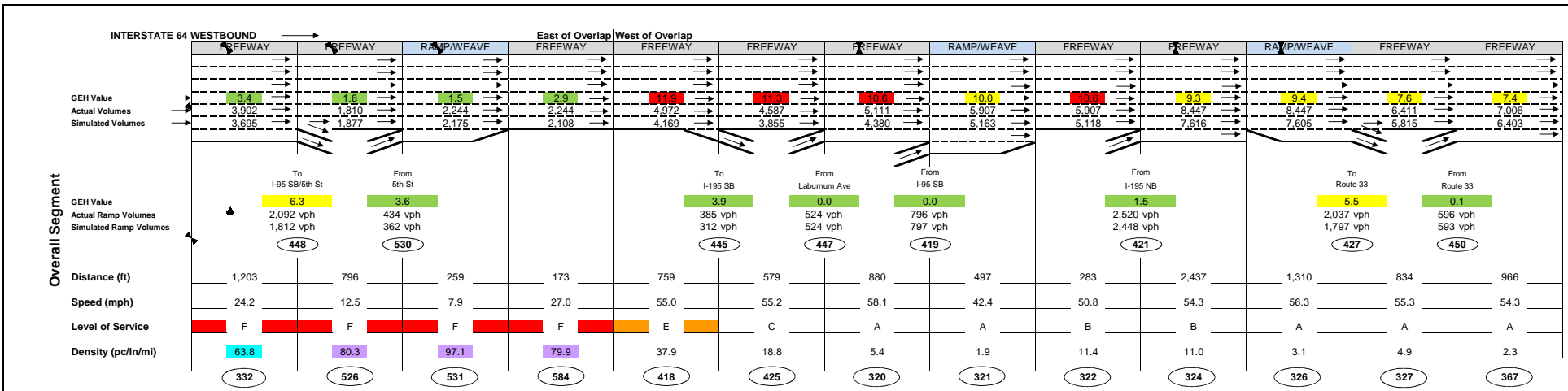
LEGEND

(500) Link Number	Freeway Density (pc/n/mi)	Weave/Ramp Density (pc/n/mi)	Freeway, Weave, and Ramp Density Coloring
LOS F	45 and above	43 and above	Degrees of LOS F:
LOS E	35 to 45	35 to 43	Density above 75 pc/n/mi
LOS D	26 to 35	28 to 35	Density above 55 pc/n/mi
LOS C	18 to 26	20 to 28	Density above 43 pc/n/mi
LOS B	11 to 18	10 to 20	
LOS A	0 to 11	0 to 10	



LEGEND

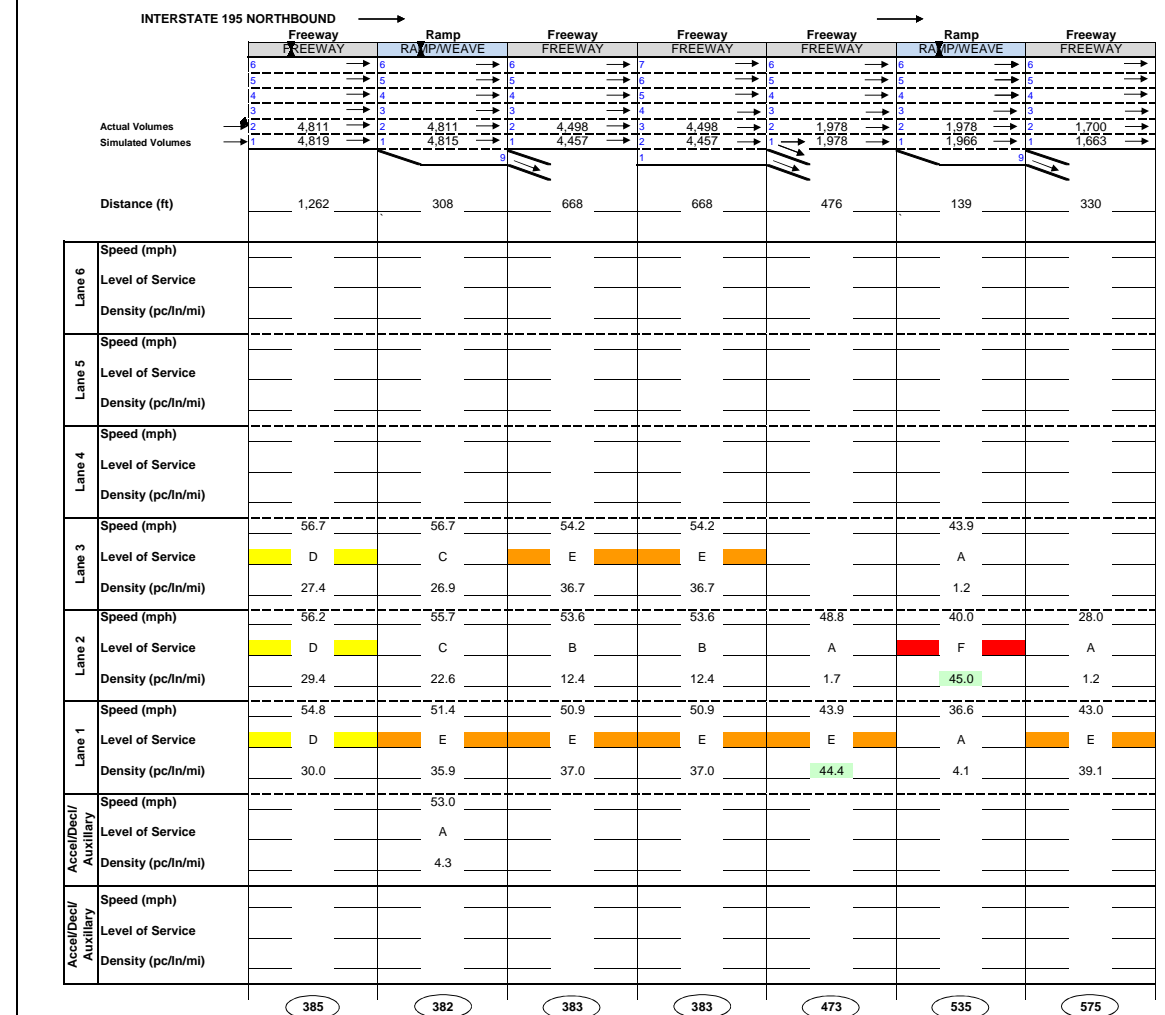
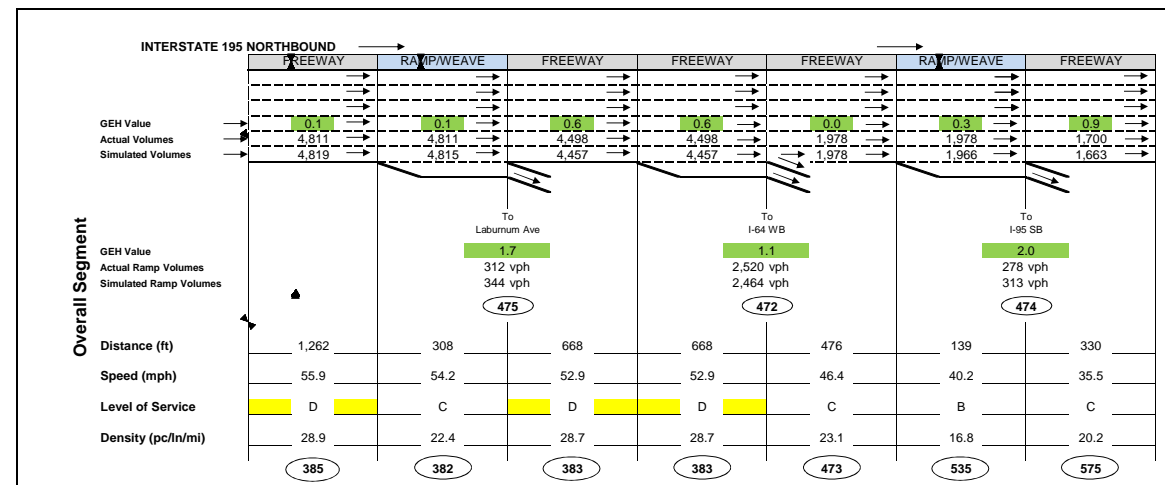
500 Link Number		Weave/Ramp Density (pc/ln/mi)		Freeway, Weave, and Ramp Density Coloring	
LOS F	45 and above	LOS F	43 and above	Degrees of LOS F:	
LOS E	35 to 45	LOS E	35 to 43	Density above	75 pc/ln/mi
LOS D	26 to 35	LOS D	28 to 35	Density above	55 pc/ln/mi
LOS C	18 to 26	LOS C	20 to 28	Density above	43 pc/ln/mi
LOS B	11 to 18	LOS B	10 to 20		
LOS A	0 to 11	LOS A	0 to 10		



LEGEND

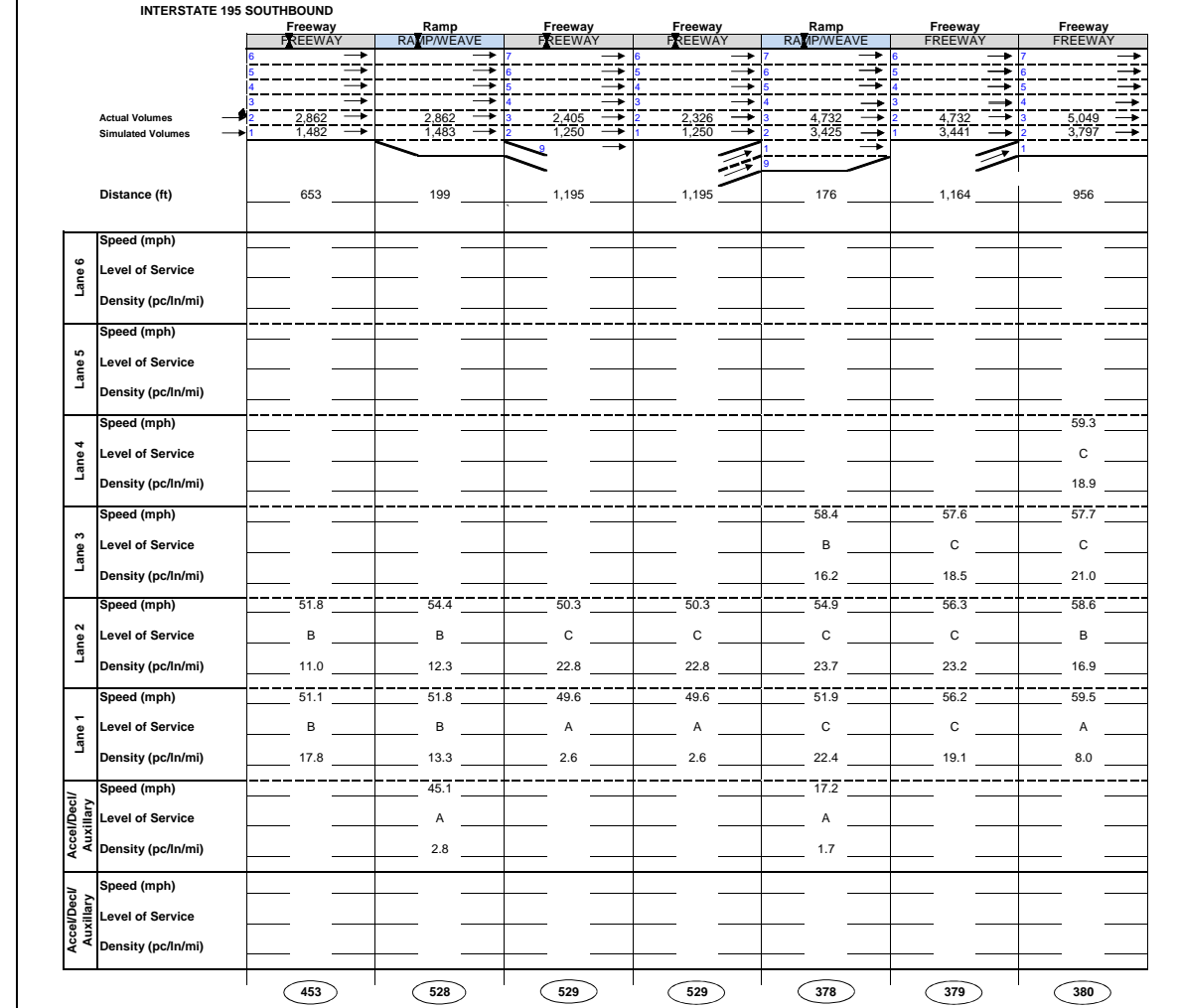
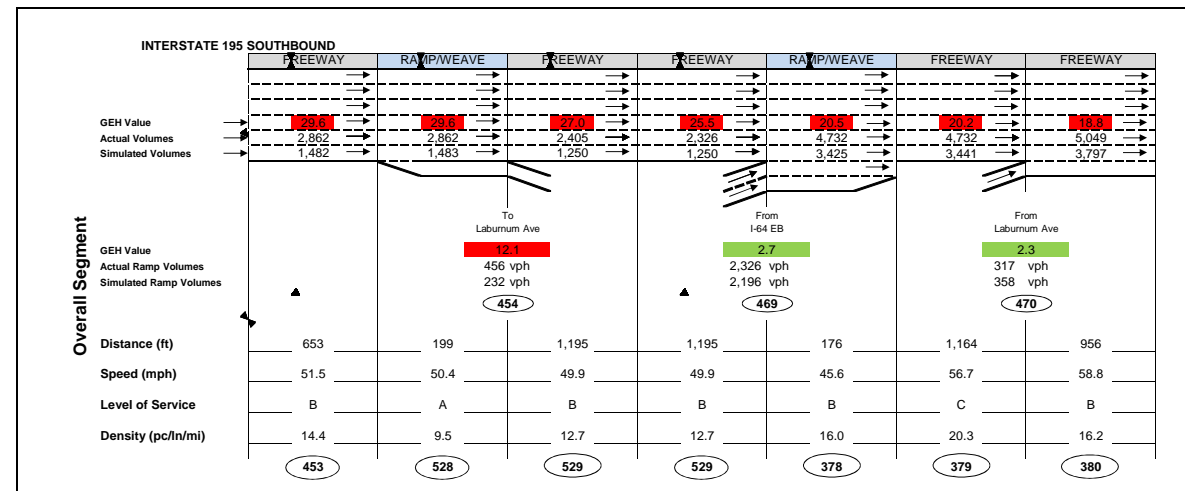
(500) Link Number

LOS	Freeway Density (pc/n/mi)	LOS	Weave/Ramp Density (pc/n/mi)	Freeway, Weave, and Ramp Density Coloring
LOS F	45 and above	LOS F	43 and above	Degrees of LOS F:
LOS E	35 to 45	LOS E	35 to 43	Density above 75 pc/n/mi
LOS D	26 to 35	LOS D	28 to 35	Density above 55 pc/n/mi
LOS C	18 to 26	LOS C	20 to 28	Density above 43 pc/n/mi
LOS B	11 to 18	LOS B	10 to 20	
LOS A	0 to 11	LOS A	0 to 10	

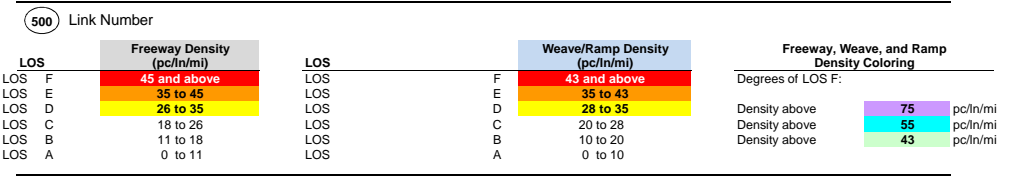


LEGEND

500	Link Number			
LOS F	Freeway Density (pc/ln/mi) 45 and above	LOS F	Weave/Ramp Density (pc/ln/mi) 43 and above	Degrees of LOS F:
LOS E	35 to 45	LOS E	35 to 43	Density above 75 pc/ln/mi
LOS D	26 to 35	LOS D	28 to 35	Density above 55 pc/ln/mi
LOS C	18 to 26	LOS C	20 to 28	Density above 43 pc/ln/mi
LOS B	11 to 18	LOS B	10 to 20	
LOS A	0 to 11	LOS A	0 to 10	



LEGEND



Kimley-Horn and Associates, Inc.

Figure 12
I-64 and I-95 Overlap Report
Southbound I-195
PM 2035 No Build Peak Hour MOE's
4:30 - 5:30 PM

I-95/I-64 Overlap Study
2035 No-Build Peak Hour Intersection Analyses Results

Table 1: Overall Intersection Results (730-830 AM)

North/South Street	East/West Street	Sig	Delay (sec)	LOS	Stopped Delay (sec)	Avg # of Stops	# Vehicles
Laburnum	I-64 EB offramp		6.2	A	0.2	0.5	645
Laburnum	I-195 NB offramp		1.6	A	0.0	0.1	1079
Laburnum	I-64 WB onramp		1.4	A	0.1	0.0	1953
N Boulevard	I-95 ramps	X	8.9	A	2.4	0.2	2254
Hermitage	Robin Hood	X	23.4	C	15.0	0.8	1815
Robin Hood	I-95 SB onramp		1.5	A	0.1	0.0	752
Leigh	Gilmer	X	25.1	C	18.4	0.6	1271
Chamberlayne	I-95 NB offramp		1.7	A	0.0	0.0	1220
3rd St	Jackson St	X	15.7	B	8.6	0.5	1368
4th St	Jackson St	X	7.8	A	4.8	0.4	777
5th St	Jackson St	X	18.0	B	12.7	0.6	1349
Broad St	College	X	7.9	A	4.7	0.4	2682
Broad St	14th St	X	9.1	A	3.8	0.3	3351
15th St	Franklin/Bank St	X	18.2	B	9.1	0.7	1224
15th St	Main St	X	18.7	B	11.7	0.7	2005
14th St	Main St	X	13.2	B	8.5	0.4	2709
14th St	Franklin St	X	15.2	B	8.8	0.6	1790
Broad St	17th St	X	31.3	C	9.2	0.7	2856
Broad St	18th St	X	21.4	C	12.6	0.6	2196
Jackson St	7th St	X	12.8	B	8.4	0.5	1066
Jackson St	8th St	X	14.8	B	10.2	0.6	876
7th St	Duval St	X	10.7	B	5.8	0.6	993
Belvedere	Leigh	X	29.9	C	21.4	0.8	3182
N Boulevard	Robin Hood	X	25.2	C	17.8	0.7	2749
Hermitage	I-95 NB offramp	X	5.5	A	0.3	0.2	717

I-95/I-64 Overlap Study
2035 No-Build Peak Hour Intersection Analyses Results

Table 1: Overall Intersection Results (430-530 PM)

North/South Street	East/West Street	Sig	Delay (sec)	LOS	Stopped Delay (sec)	Avg # of Stops	# Vehicles
Laburnum	I-64 EB offramp		6.6	A	0.2	0.5	615
Laburnum	I-195 NB offramp		1.0	A	0.0	0.0	951
Laburnum	I-64 WB onramp		1.0	A	0.0	0.0	2112
N Boulevard	I-95 ramps	X	20.1	C	5.7	0.5	2585
Hermitage	Robin Hood	X	27.1	C	17.7	0.8	2007
Robin Hood	I-95 SB onramp		5.4	A	1.7	0.1	1095
Leigh	Gilmer	X	39.2	D	28.9	0.9	1279
Chamberlayne	I-95 NB offramp		0.8	A	0.0	0.0	1552
3rd St	Jackson St	X	13.9	B	10.0	0.5	669
4th St	Jackson St	X	18.9	B	13.1	0.7	783
5th St	Jackson St	X	15.0	B	11.2	0.5	929
Broad St	College	X	42.7	D	29.0	1.1	2085
Broad St	14th St	X	64.8	E	28.7	2.0	2712
15th St	Franklin/Bank St	X	14.7	B	8.8	0.5	875
15th St	Main St	X	21.8	C	15.7	0.7	1841
14th St	Main St	X	17.1	B	12.1	0.6	2366
14th St	Franklin St	X	24.3	C	15.0	0.8	1365
Broad St	17th St	X	139.2	F	74.6	3.7	1988
Broad St	18th St	X	44.9	D	28.4	1.3	2077
Jackson St	7th St	X	51.6	D	30.3	1.4	2231
Jackson St	8th St	X	13.0	B	7.6	0.6	829
7th St	Duval St	X	36.1	D	20.8	1.2	2422
Belvedere	Leigh	X	65.5	E	41.3	1.4	4029
N Boulevard	Robin Hood	X	29.5	C	19.3	0.8	2999
Hermitage	I-95 NB offramp	X	2.3	A	0.2	0.1	557

